


Easdar Optoelectronic (Guangdong) Co., Ltd.  
No.152, Tanlong North Road, Tanzhou Town, Zhongshan City, Guangdong Province

July 28, 2024

Dear Sirs,

We would like to apply for the type approval according to ECE.

Function	ECE approval number
LED replacement light sources	E8*37R03/49*0090*00

Trade name or mark	:	
Manufacturer's name for type of device	:	E4E-H11
Name and address of manufacturer	:	Easdar Optoelectronic (Guangdong) Co., Ltd. No.152, Tanlong North Road, Tanzhou Town, Zhongshan City, Guangdong Province

We confirm that the application mentioned above has not been submitted to any other EC member state, nor has any other member state granted a corresponding approval.

Sincerely


Easdar Optoelectronic (Guangdong) Co., Ltd.

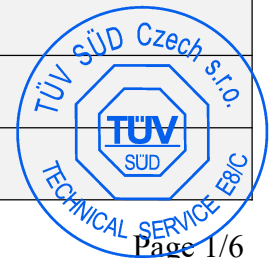


Information document No.: E4E-H11-00

First application date : July 28, 2024

## INFORMATION DOCUMENT

1	General	
1.1	Trade name or mark of the light source	
1.2	Type	E4E-H11
1.3	Name and address of manufacturer	Easdar Optoelectronic (Guangdong) Co., Ltd. No.152, Tanlong North Road, Tanzhou Town, Zhongshan City, Guangdong Province
1.4	Name and address of the assembly plant	Easdar Optoelectronic (Guangdong) Co., Ltd. 8th Floor, Building 1, No.152, Tanlong North Road, Tanzhou Town, Zhongshan City
1.5	Name and address of manufacturer's representative(if any)	N.A.
1.6	Manufacturer's name(s) for the AE device(s)	N.A.
1.7	Location and method of affixing of the approval mark	Screen printing or laser on the product
1.8	Remark	LED replacement light source for replacement of the light source category H11. Brief description of Component " E8*10R06/03*15991*00" this is not description, reference to R10 shall be here but not called Brief description.
2	Concise description	
2.1	Category of light source	H11
2.2	Light producing technology	<del>Incandescent (filament)</del> -LED
2.3	Rated voltage/Rated wattage	12V/18W
2.4	The rated voltage and maximum wattage	12V/20W
2.5	Range of the electrical current	1.35~1.65A
2.6	Colour of the light emitted	White/ <del>Selective yellow</del> / <del>Amber</del> /Red
2.7	Colour coating on glass bulb of the filament light source	N/A
2.8	Halogen filament light source	No
2.9	High-Efficiency LED replacement light source	Yes
2.10	AE device(s)	No
	Manufacturer's name(s) for the AE device(s)	N/A
2.11	Specific identification code(s) of AE device(s)	N/A.

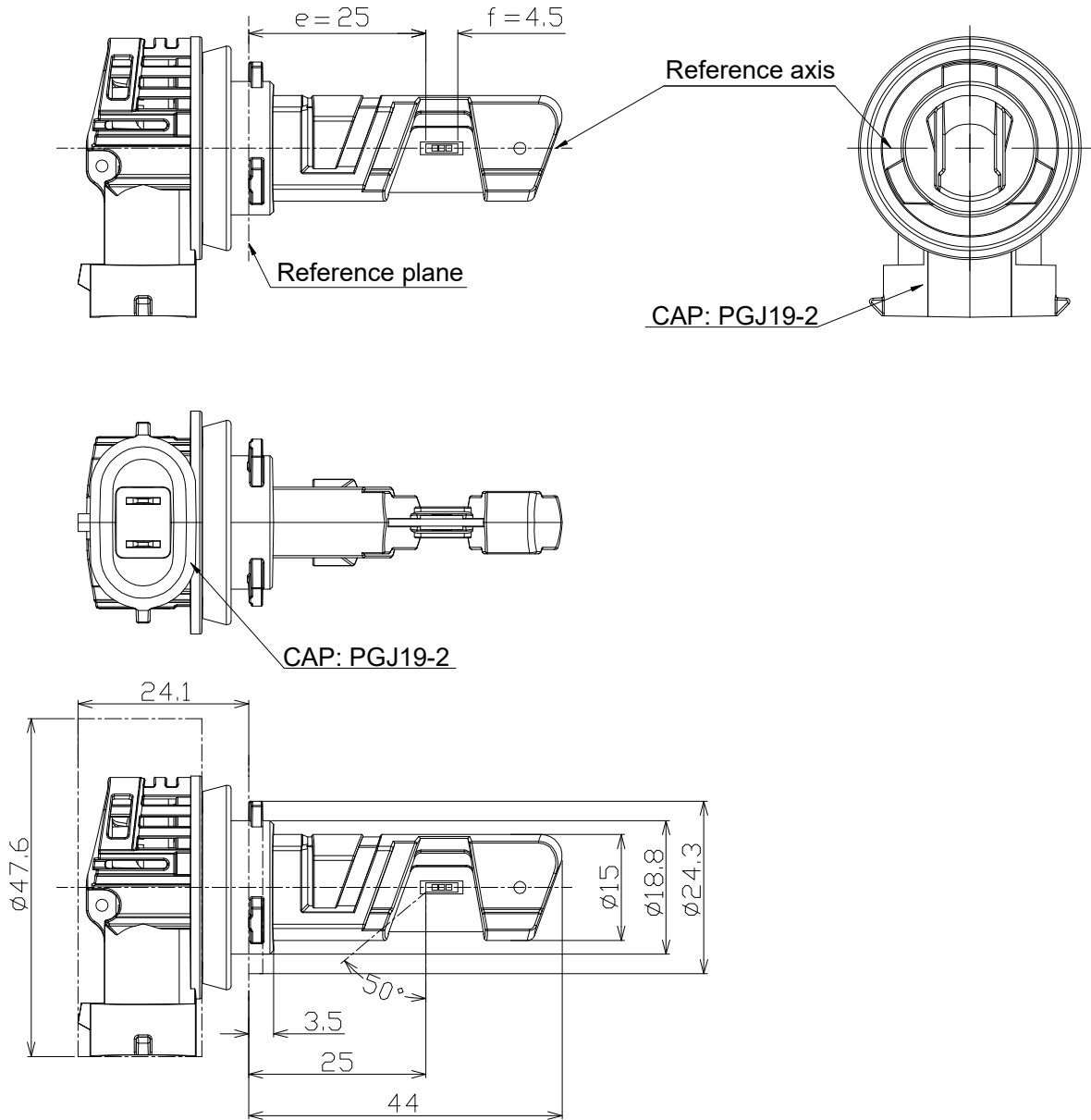


Information document No.: E4E-H11-00

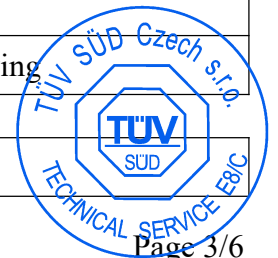
First application date : July 28, 2024

2.12	LED replacement light source with particular electrical polarity	No
2.13	LED replacement light source with oversize cap	No
2.14	Position of the approval mark	Laser on the housing





General assembly drawing

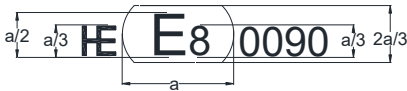




Trade mark

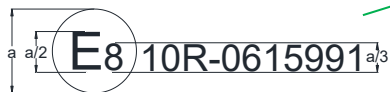


Approval mark



a=2.5mm min

Approval mark



a=6mm min

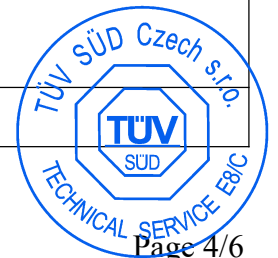


Location of that marking:

LEDr  
E4E-H11  
12V 18W



Marking



Information document No.: E4E-H11-00

First application date : July 28, 2024

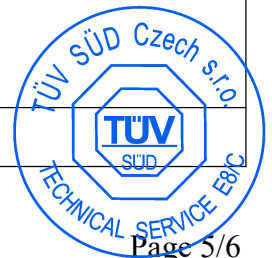


By scanning the QR code on the packaging, you can view the following content (not limited to):

- 1.Applicable products and vehicle models.
- 2.Instructions for replacing the LED light sources (available in Russian, French, and the local language).
- 3.Guidance for the correct installation and operation of the LED light sources.
- 4.Relevant safety warnings.



External packing



Page 5/6

E8\*37R03/49\*0090\*00

Information document No.: E4E-H11-00

First application date : July 28, 2024

External packing marking:

Type: E4E-H11

1:1 HALOGEN LAMP REPLACEMENT

HIGH-PERFORMANCE LED

REPLACEMENT LIGHT SOURCE

LEDr  
E4E-H11  
12V 18W

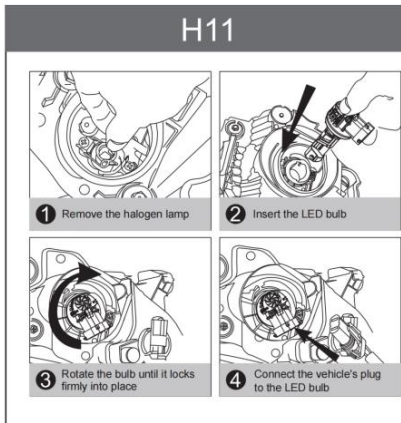


For detailed information regarding applicable functions and compatible vehicle models, please refer to the following website:

For reference on professional maintenance and repair shops, visit our website <https://www.easdarlighting.com/>

Applicable products/vehicle models (partial):

NO.	Year	Make	Model	Function
1	2016-2020	BMW	3 Series (F30)	Low Beam
2	2017-2022	Mercedes-Benz	GLC (X253)	Fog Light
...	...	...	...	...



### WARRANTY SERVICE

Please follow the troubleshooting steps below before requesting warranty service.

	<b>Flickering</b> Please install a suitable CANbus decoder to resolve the issue.
	<b>Light Does Not Turn On</b> If the bulb still does not light up, the issue may be with the vehicle's circuit or the bulb itself. A defective bulb (within the warranty period) will be replaced.
	<b>Abnormal Light/ Error Message</b> This is typically a compatibility issue. Please install a suitable CANbus decoder to resolve it.
	<b>Flickering</b> <b>Symptom:</b> Intermittent Operation (works intermittently or stops working when hot). <b>Solution:</b> 1. Ensure there is adequate space around the bulb for heat dissipation. If necessary, replace the dust cover with one that allows for better airflow. 2. Check all wiring connections to ensure they are secure.

**Warranty Exclusions:**  
The following conditions are not covered under warranty:  
1. CANbus Compatibility: Vehicles designed for halogen bulbs may require an additional CANbus decoder (not included) to prevent issues such as flickering or error codes. Problems arising from the absence of a compatible decoder are excluded.  
2. User Damage: Any damage resulting from accidental impact, mishandling, improper modification, or unauthorized repair attempts (including broken LED chips or damaged wires).  
3. Installation Issues: Damage or incompatibility due to incorrect installation, or if the vehicle's limited installation space/prevents proper fitting of our product.  
4. Force Majeure: Damage caused by irresistible natural disasters such as earthquake, flood, fire, or any other act of God.

### PRODUCT MANUAL

**Warning:** when the LED (replacement light) source is not used in accordance with the instructions with its package and with the instructions provided with the vehicle, this LED replacement light source may cause a fault in the vehicle's electrical system and/or pose an operational and/or traffic safety risk.

**For reference on professional maintenance and repair shops, visit our website <https://www.easdarlighting.com/>**

Product Manual

