

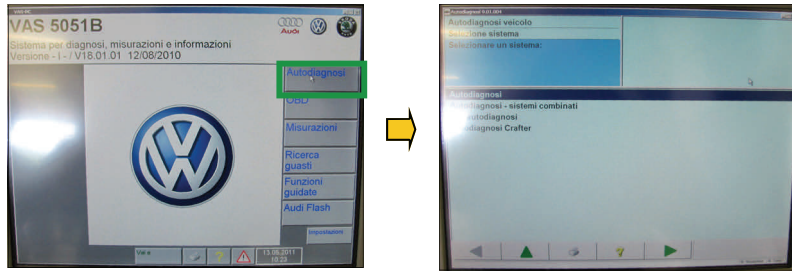
PARKING SENSORS PROFILE ACTIVATION rev 3.14

The kit is studied to equip the VW group vehicles with the aftermarket and visualize them directly to the OEM radios. For a right functionality it is necessary to enable the function in the car system by using the VAS computer. Follows the steps below described:

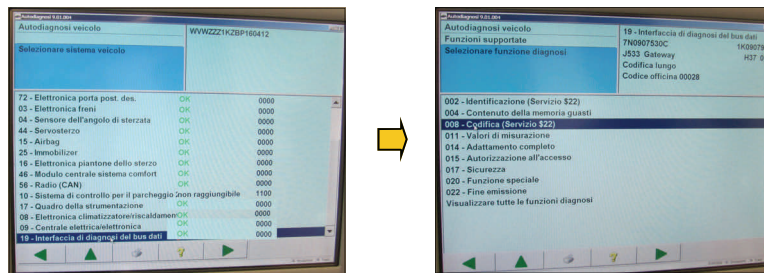
Connect the computer diagnosis VAS to the OBD plug of the car.



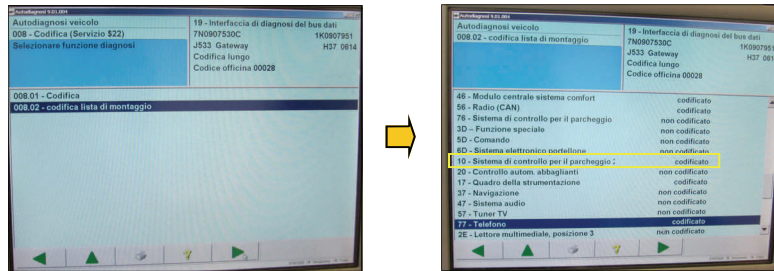
Select the voice **Auto diagnosis**



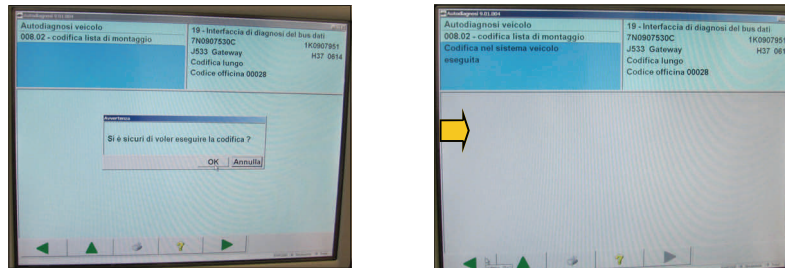
Select the address 19 then in the next page select the profile 008.



Once in the profile 008 select the code list of installation then the address 10 Parking sensors control system.



Confirm the coding, the system will give the OK once the coding is done.



The activation is done.

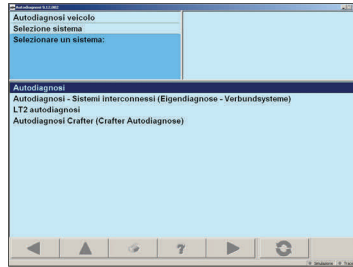
PARKING SENSORS PROFILE ACTIVATION rev 3.14

The kit is studied to equip the VW Golf 7 model with the aftermarket parking sensors and visualize them directly to the OEM radios. For a right functionality it is necessary to enable the function in the car system by using the VAS computer. Follows the steps below described:

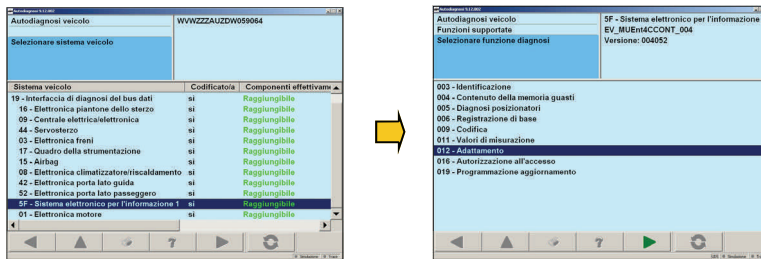
Connect the computer diagnosis VAS to the OBD plug of the car.



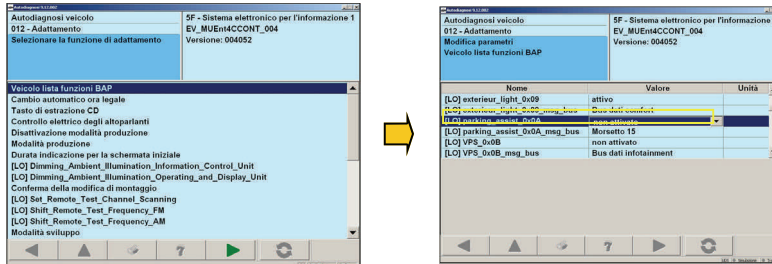
Select the voice **Auto diagnosis**



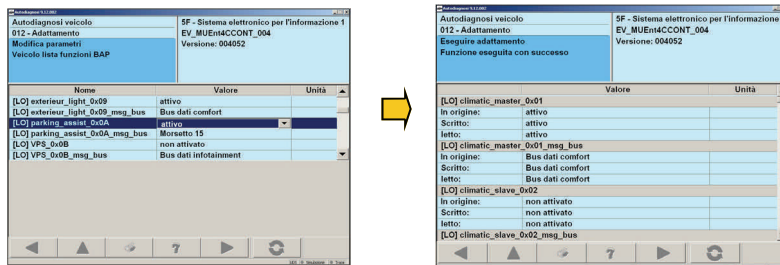
Select the address 19 then the voice 5F and consequently the position 012 .



select the code list BAPand then park assist.



Confirm the coding, the system will give the OK once the coding is done.



The activation is done.

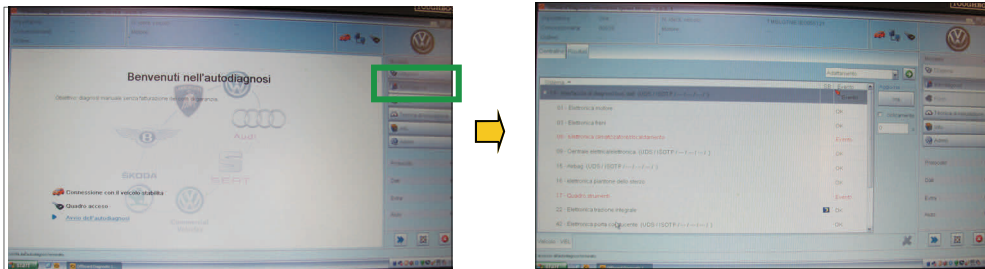
PARKING SENSORS PROFILE ACTIVATION rev 3.14

The kit is studied to equip the Skoda Octavia 2013 model with the aftermarket parking sensors and visualize them directly to the OEM radios. For a right functionality it is necessary to enable the function in the car system by using the VAS computer. Follows the steps below described:

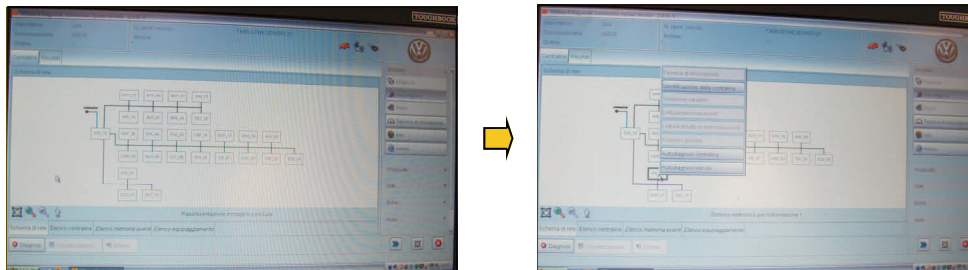
Connect the computer diagnosis VAS to the OBD plug of the car.



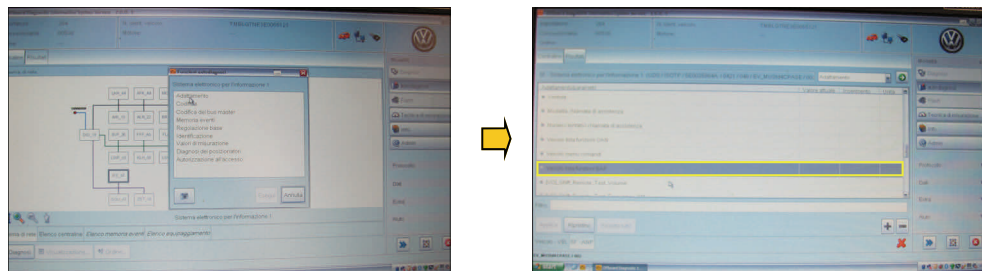
Select the voice **Adjustment**.



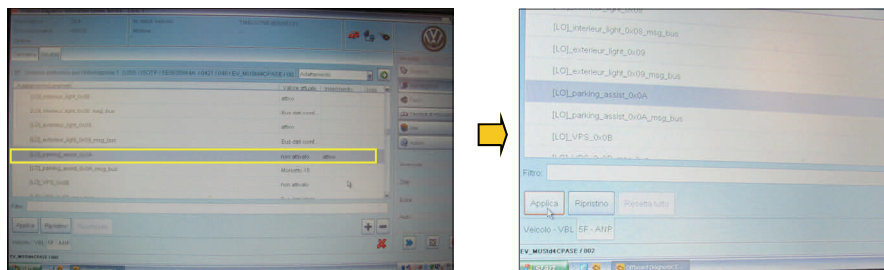
Select the address IFE_5F then in the next page select the central unit auto diagnosis.



Once in the profile central unit auto diagnosis select the voice adjustment then in the next page car code list BAP.



Select the voice parking assist and then click Apply.



The activation is done.

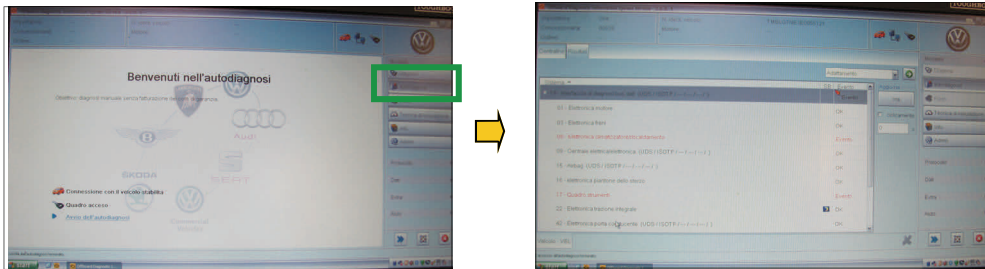
PARKING SENSORS PROFILE ACTIVATION rev 3.14

This system is designed to equip the vehicles Skoda Octavia 2013 / Seat Leon 2013 / VW Golf 7, AUDI A3 2014 / VW Polo 2014 of aftermarket parking sensors with displaying system on OEM radios. For proper working, it's necessary to enable this function on the control unit of the vehicle using ODIS.

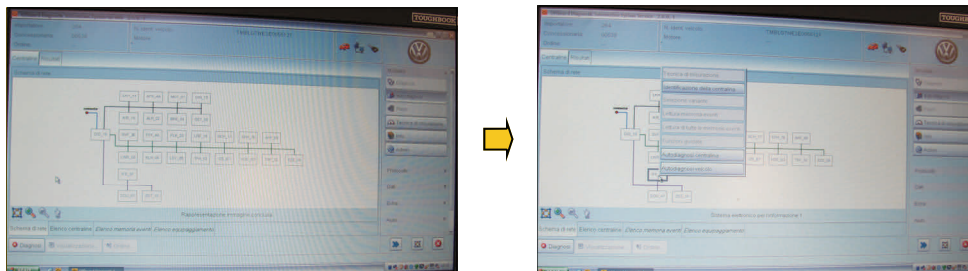
Please connect ODIS diagnosis computer to the vehicle's OBD plug.



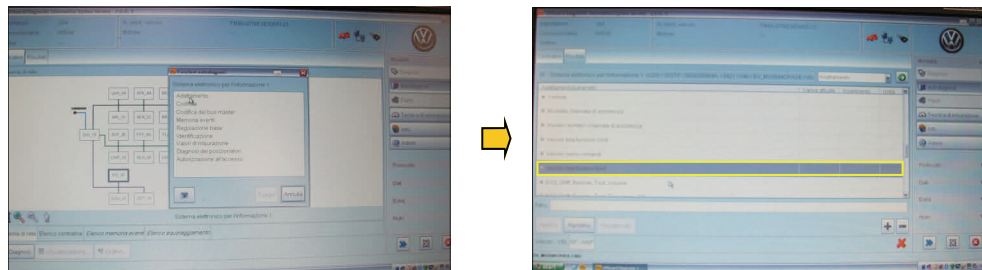
Please select the voice **Adaptation**.



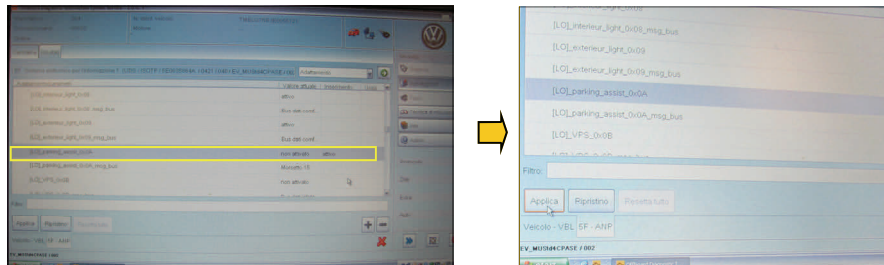
Please select address IFE_5F so on the next view please select **Control unit self-diagnosis profile**.



Now please select the voice Adaptation and then the voice **Vehicle BAP functions list**.



Now please select the voice **Parking assist** and in the end please select **Apply**.



The information in this guide are purely for information purposes, therefore, are subject to change without notice. At the time of publication the information is correct and reliable. However Paser can not be held responsible for any consequences resulting from errors or omissions in this manual. Paser reserves the right to improve / change the product or manual without obligation to notify users.

PARKING SENSORS PROFILE ACTIVATION rev 3.14

In the central unit 5F

In ADAPTATION

At the voice "Vehicle commands menu", please set the display menu as described below:

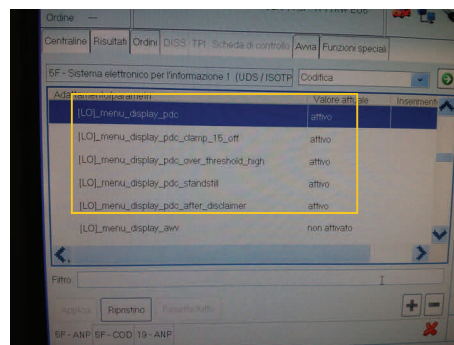
[LO]_menu_display_pdc (ACTIVATE)

[LO]_menu_display_pdc_clamp_15_off (ACTIVATE)

[LO]_menu_display_pdc_over_threshold_high (ACTIVATE)

[LO]_menu_display_pdc_standstill (ACTIVATE)

[LO]_menu_display_pdc_after_disclaimer (ACTIVATE)



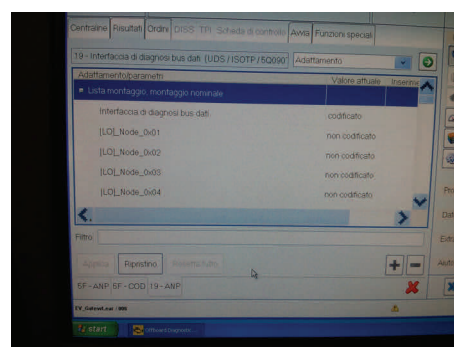
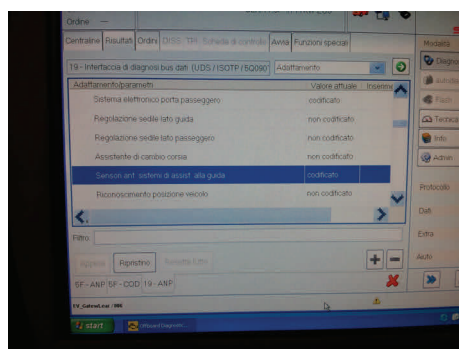
And then please select APPLY.

In the central unit 19

In ADAPTATION

At the voice "Mounting list, nominal mounting" please set Parking assistance system (ACTIVATE)

At the voice "Mounting list, nominal mounting" please set Front sensors drive parking assistance systems (ACTIVATE)



And then please select APPLY.

For a correct operation on the AUDI A3, it's necessary to do another enabling on the car central unit, by using the ODIS.

Please, follow these steps here below:

Entry into the Units section where all units of the car will be displayed;

Select the address 76: a scroll menu will be opened;

By the scroll menu, select the item UNIT SELF-DIAGNOSIS;

In the following window, select the item ACCESS PERMISSION and click on Apply;

In the following window, select the login "(VO)_Login" method and input the login code 71679; then click on Apply;

Done this procedure, ODIS will go back to the scroll menu window about the address 76;

Select again the item UNIT SELF-DIAGNOSIS;

In the following window, select the voice ENCODE and click on Apply;

To the scroll menu window, set the item "WITH OPS (BAP 4.0)";

It will be requested to do the encode: click on "YES";

Done the ODIS encode, the system will go back to the central Units window.

The enabling is done successfully.

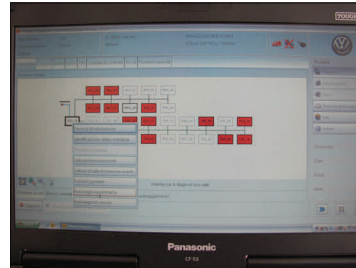
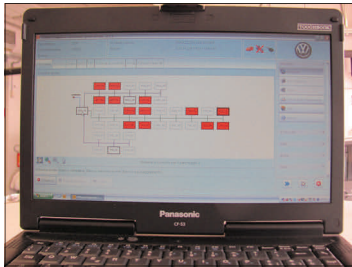
PARKING SENSORS PROFILE ACTIVATION rev 3.14

This system is designed to equip the vehicles Audi A1 of aftermarket parking sensors with displaying system on OEM radios. For proper working, it's necessary to enable this function on the control unit of the vehicle using ODIS.

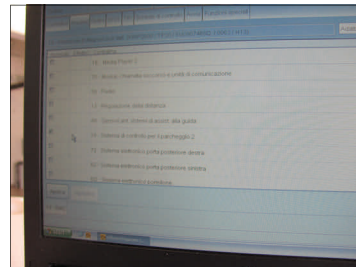
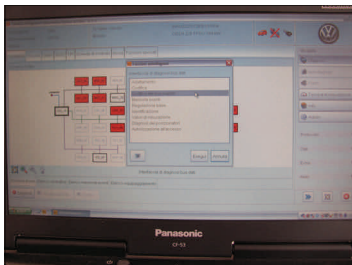
Please connect ODIS diagnosis computer to the vehicle's OBD plug.



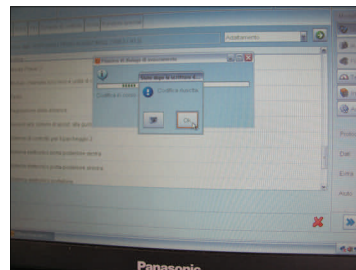
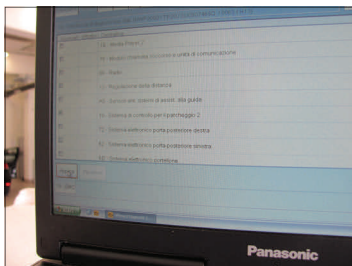
Please select address **DID_19** so on the next view please select **Control unit self-diagnosis profile**.



Select **Bus Master Encode** and enable **10 - Parking System Control 2**.



Click on **Apply** complete the encode.

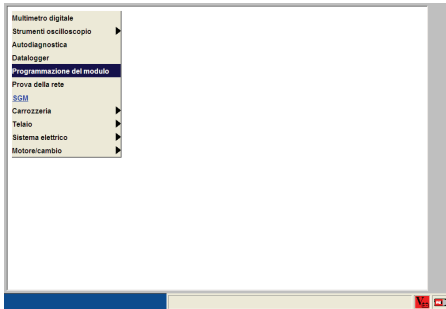


1. Entry into the Units section where all units of the car will be displayed;
2. Select the address **PLA_10**, a scroll menu will be displayed;
3. By the scroll menu, select the item **UNIT SELF-DIAGNOSIS**;
4. In the following window, select the item **ACCESS PERMISSION** and click on Apply;
5. In the following window, select the login "(VO)_Login" method and input the login code **71679**; then click on Apply;
6. Done this procedure, ODIS will go back to the scroll menu window about the address **PLA_10**;
7. Select again the item **UNIT SELF-DIAGNOSIS**;
8. In the following window, select the voice **ENCODE** and click on Apply;
9. To the scroll menu window, set the item **"WITH OPS (BAP 4.0)";**
10. It will be requested to do the encode: click on **"YES"**;
11. Done the ODIS encode, the system will go back to the central Units window.
12. The enabling is done successfully.

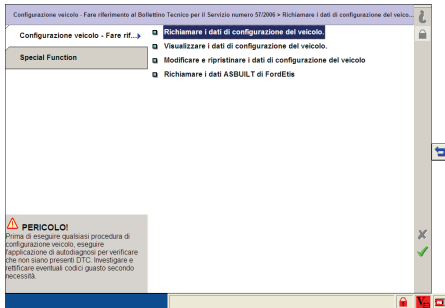
PARKING SENSORS PROFILE ACTIVATION rev 3.14

Once the connections are done it must to activate the Ford car to visualize the kit installed to do this please use the Ford computer diagnosis IDS of Ford.
Follow the steps below:

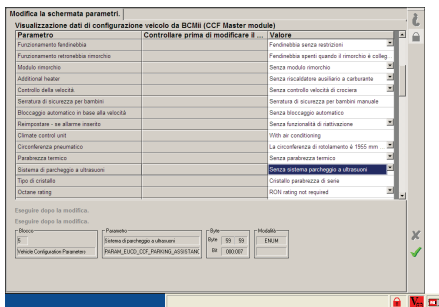
Connect the IDS to the OBD plug and enter the modules parameters programming.



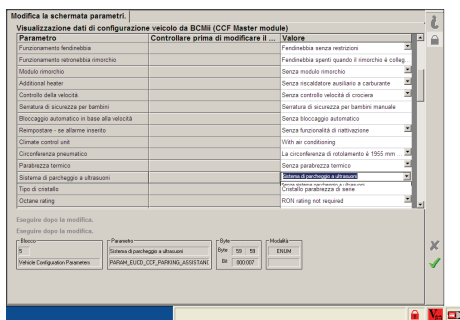
Recall the car data configuration of the vehicle



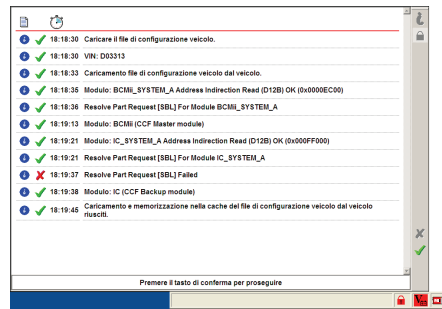
Scroll the list of the parameters till find the voice: **ultrasonic parking system**, that usually is set as: **without ultrasonic parking system**



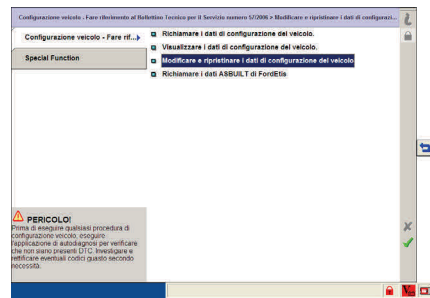
Scroll the menu and set the voice as: 'il menu' a tendina del parametro selezionato e impostarlo su **ultrasonic parking system**



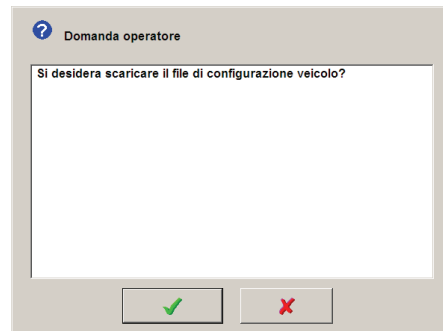
Follow the indications and in the end confirm.



Once back the main menu select the voice: **Modify and reset the car configuration data.**



Confirm the green symbol of the previous page. To the next question confirm again and follow the instructions supplied by the computer.

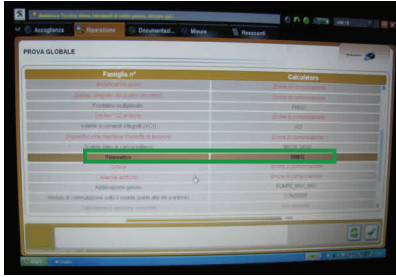


To the end of the procedure disconnect the IDS then by activating the ignition if the Parkview it is not already connected the car will visualize the sentence telling that the park system it is not working. It will disappear when the unit is connected.

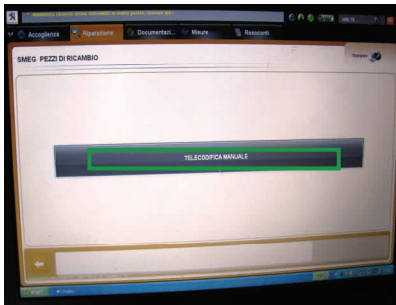
PARKING SENSORS PROFILE ACTIVATION rev 3.14

Once the connections are done it must to activate the Peugeot car to visualize the kit installed to do this please use the Peugeot computer diagnosis **DIAGBOX** of Peugeot.
Follow the steps below:

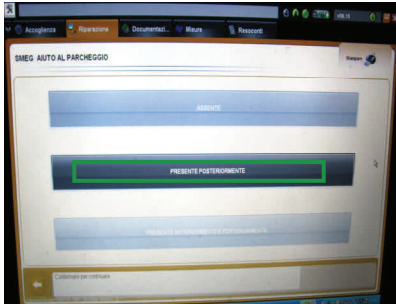
Connect the computer diagnosis DIAGBOX to the OBD plug of the car.
Select the voice **REPAIR, SELECT THE ITEMS IN SEQUENCE AS BELOW.**
TELEMATIC SMEG



MANUAL REMOTE CODING



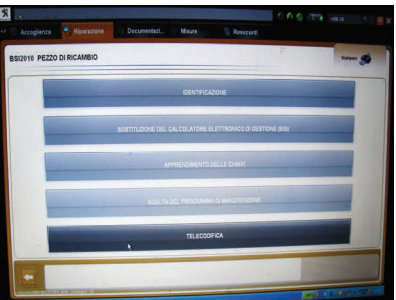
PRESENT IN THE BACK



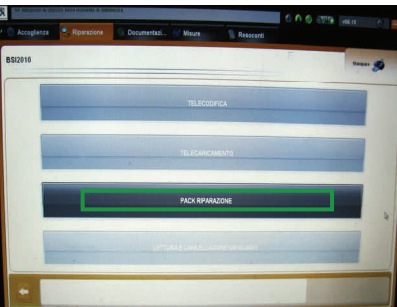
ELECTRONIC CALCULATOR MANAGEMENT (BSI)



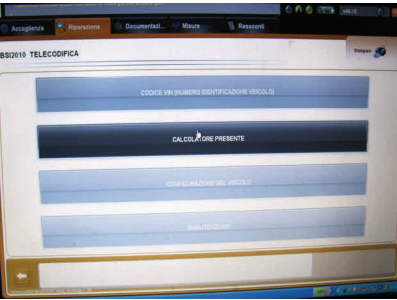
REMOTE CODING



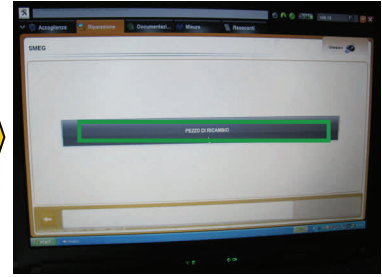
PACK REPAIR



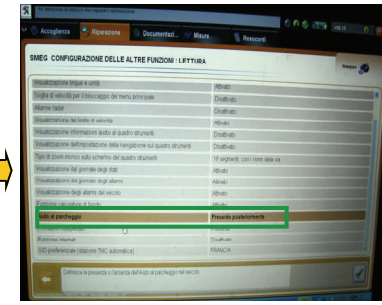
PRESENT CALCULATOR



SPARE PART

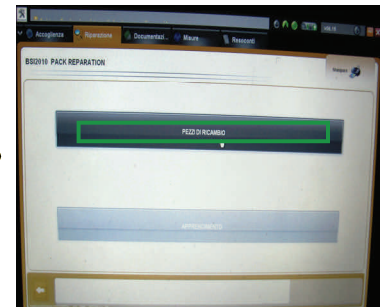


HELP THE PARKING

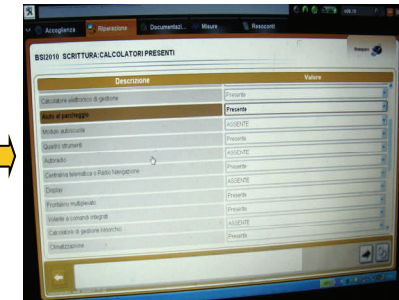


CONFIRMING THE SELECTION "PRESENT IN THE BACK" THE WINDOW REMOTE CODING CARRIED WILL APPEAR

SPARE PARTS



HELP THE PARKING "PRESENT"

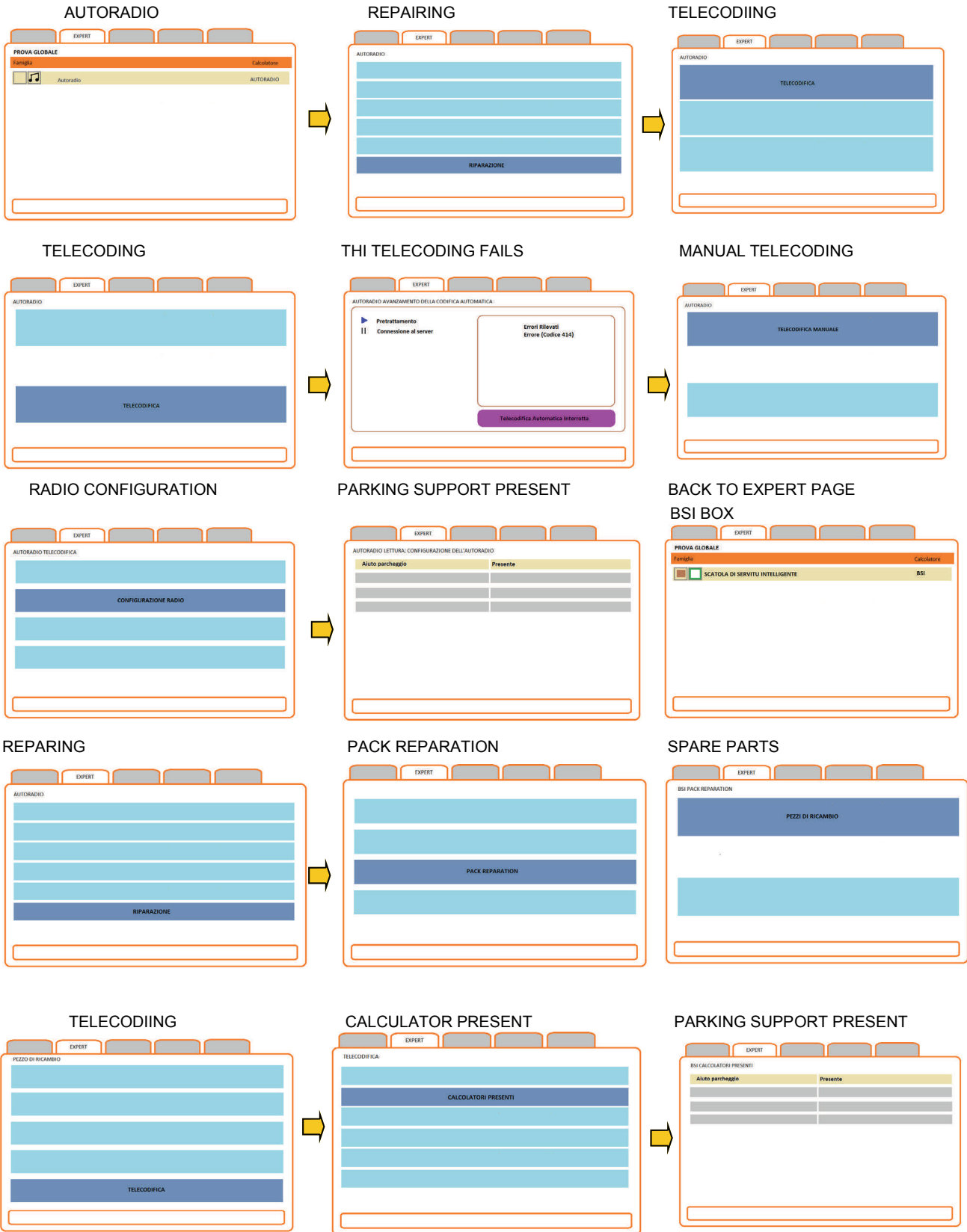


The information in this guide are purely for information purposes, therefore, are subject to change without notice. At the time of publication the information is correct and reliable. However Paser can not be held responsible for any consequences resulting from errors or omissions in this manual. Paser reserves the right to improve / change the product or manual without obligation to notify users.

PARKING SENSORS PROFILE ACTIVATION rev 3.14

The following procedure must be followed if you use the new software connected to the web. **PLEASE DISCONNECT DIAGBOX FROM THE WEB!** Once the connections are done it must to activate the Peugeot car to visualize the kit installed to do this please use the Peugeot computer diagnosis **DIAGBOX** of Peugeot. Follow the steps below:

Connect the computer diagnosis **DIAGBOX** to the OBD plug of the car.
Select the voice **EXPERT**, SELECT THE ITEMS IN SEQUENCE AS BELOW.



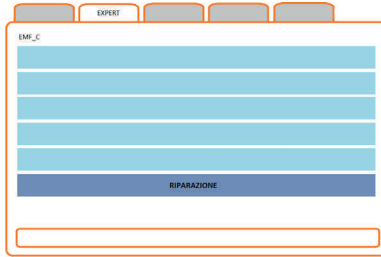
The information in this guide are purely for information purposes, therefore, are subject to change without notice. At the time of publication the information is correct and reliable. However Paser can not be held responsible for any consequences resulting from errors or omissions in this manual. Paser reserves the right to improve / change the product or manual without obligation to notify users.

PARKING SENSORS PROFILE ACTIVATION rev 3.14

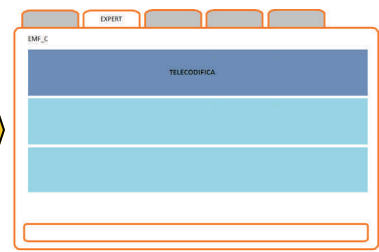
BACK TO EXPERT PAGE
VISUALIZE MULTIFUNCTION EMF_C



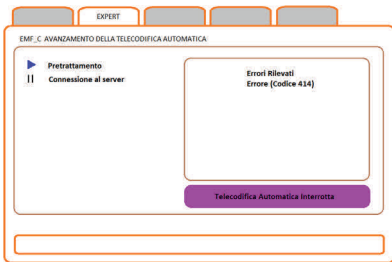
REPAIRING



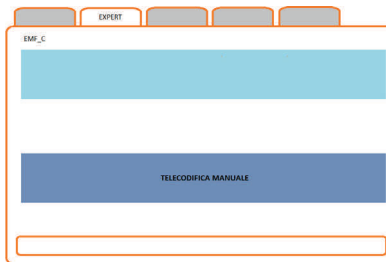
TELECODING



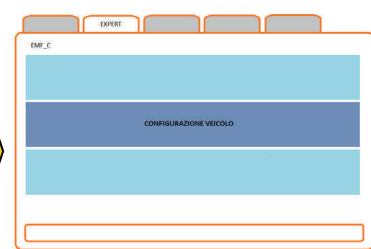
OPERATION FAILS



MANUAL TELECODING



VEHICLE CONFIGURATION



PARKING SUPPORT

